

**Collection Soloroll.  
Una scelta automatica.**



**Serge Ferrari**  
**JM** Technical Textiles

 **MERMET**  
SUN CONTROL TEXTILES



## Soltis 99

(Polyester con PVC)



Lato Alu\* (A)



99-2055 (B)



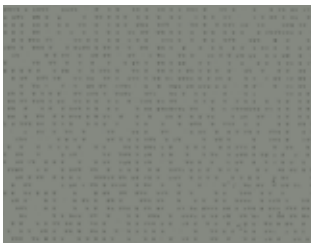
99-2058 (B)



99-2059 (B)



99-2068 (B)



99-2073 (B)



99-50284 (B)



99-50285 (B)



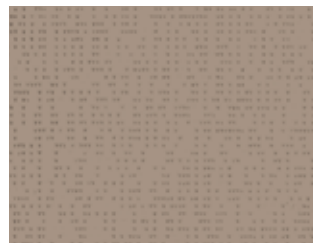
99-50287 (B)



99-50288 (B)



99-50286 (B)



99-50289 (B)



99-50290 (B)



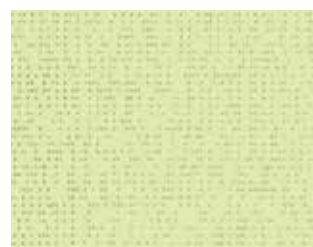
99-50291 (B)



99-50292 (B)



99-50293 (B)



99-50294 (B)



99-50295 (B)



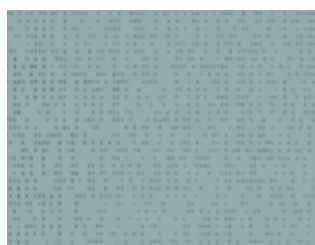
99-50296 (B)



99-50297 (B)



99-50298 (B)



99-50299 (B)



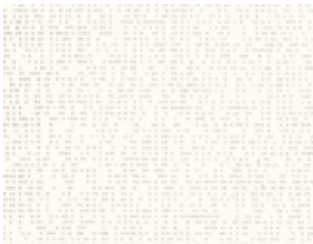
99-50300 (B)

Tutti i modelli vengono prodotti con inchiostri da stampa standard e si possono pertanto scostare dalla tonalità cromatica originale.

\*comune a tutti i teli 99 colorato / alu



## Soltis 99



Lato bianco

(A)



99-2115

(B)

## Soltis 99 LowE



(A)

99-2061 E



(B)

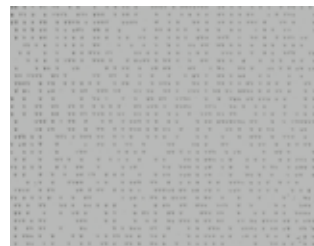
## Soltis Blackout B99 / B990 / B702



B99-Verso alu\* (A)



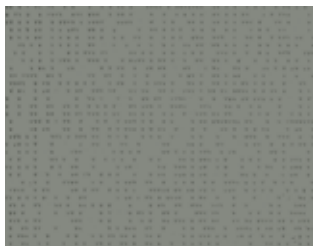
B99-50284 (B)



B99-50358 (B)



B99-50613 (B)



B99-50354 (B)



B99-50614 (B)



B99-50288 (B)



B99-50285 (B)



B99-50287 (B)



B99-50348 (B)

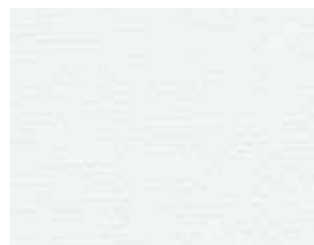
\*comune a tutti i teli B99



(A) B990-50360



(B)



(A) B702-455



(B)



## 40818 Starlet Transparent

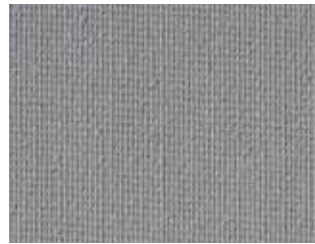
(Polyester senza PVC)



40818-4898



40818-5108



40818-5770



40818-6117



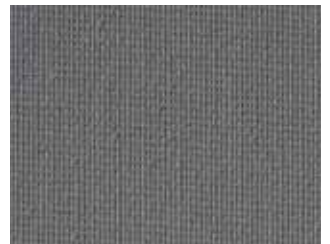
40818-4899



40818-10331



40818-7616



40818-6625



40818-5832



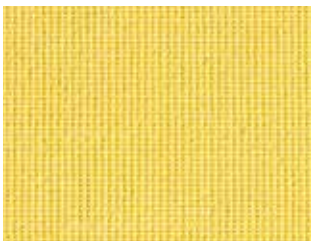
40818-10328



40818-7619



40818-10327



40818-10326



40818-10332



40818-7622



40818-10330



40818-10329



40818-7625



40818-7628



## 40985 Starlet Blackout Color

(Polyester ohne PVC)



40985-4898



40985-6117



40985-10331



40985-5108



40985-6625



40985-5832





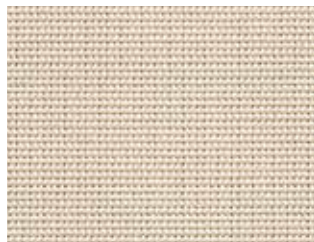


## M-Screen 8505

(Fibra di vetro con PVC)



8505-0202



8505-2020



8505-0220



8505-0721



8505-0771



8505-0207



8505-0720



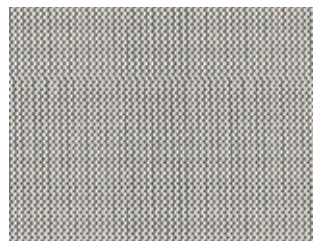
8505-0210



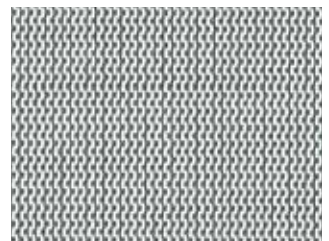
8505-0707



8505-0710



8505-2041



8505-0201



8505-0121



8505-0141



8505-3001



8505-3010



8505-3006



8505-3030



## Screen Vision 10%

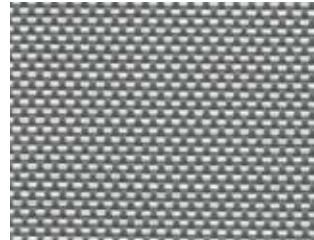
(Fibra di vetro con PVC)



SV10-0202



SV10-0207



SV10-0102



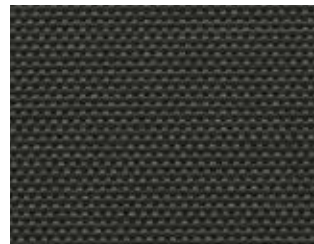
SV10-0707



SV10-0101



SV10-3001



SV10-3030



SV10-3006



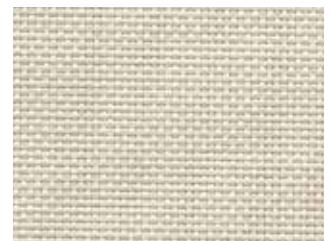
SV10-0110



SV10-0720



SV10-2022



SV10-2020



SV10-0210



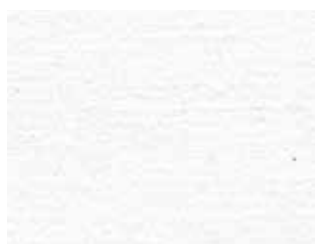
SV10-0220



Satiné 5500 LowE

## Flocké 11201

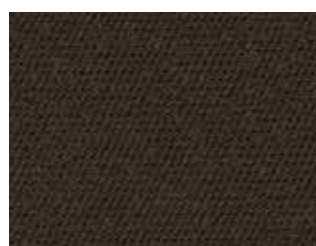
(Fibra di vetro senza PVC)



Verso bianco\* (B)



11201-606



11201-617



11201-608



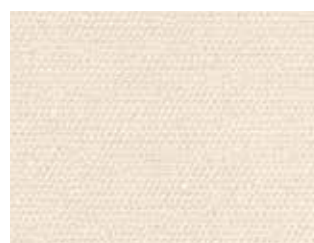
11201-600



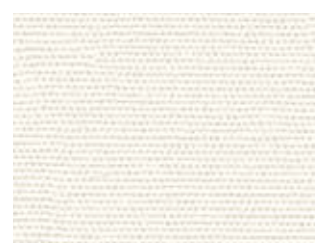
11201-609



11201-618



11201-625



11201-623



11201-614

\*comune a tutti i teli 11201



## KIBO 8500

(Fibra di vetro senza PVC)



Verso bianco\* (B)



8500-0207



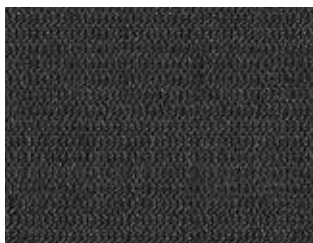
8500-0707



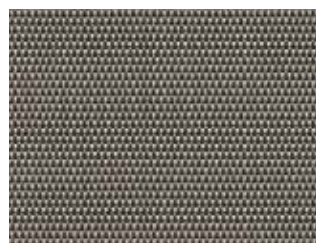
8500-3001



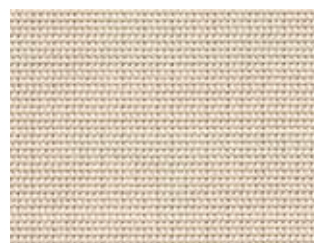
8500-3006



8500-3030



8500-3010



8500-2020



8500-0220






8500-0202




\*comune a tutti i teli 8500






**PROPRIETÀ DEL MATERIALE - COLLECTION SOLOROLL**

DISEGNO	LATO			TENDA				FATTORE SOLARI DENTRO	
				T <sub>e</sub>	R <sub>e</sub>	A <sub>e</sub>	T <sub>v</sub>		
<b>SERGE FERRARI</b>									
99-2055	A B	0.29	0.32	0.13	0.48 0.65	0.39 0.22	0.12	0.41 0.35	M1 / B1 / VKF 5.2 / B-s2, d0
99-2058	A B	0.29	0.32	0.09	0.44 0.42	0.47 0.49	0.08	0.42 0.43	M1 / B1 / VKF 5.2 / B-s2, d0
99-2059	A / B	0.29	0.32	0.05	0.45	0.50	0.05	0.42	M1 / B1 / VKF 5.2 / B-s2, d0
99-2068	A B	0.29	0.32	0.03	0.36 0.09	0.61 0.88	0.02	0.44 0.53	M1 / B1 / VKF 5.2 / B-s2, d0
99-2073	A B	0.29	0.32	0.04	0.40 0.25	0.56 0.71	0.03	0.43 0.48	M1 / B1 / VKF 5.2 / B-s2, d0
99-50284	A B	0.29	0.32	0.09	0.48 0.63	0.43 0.28	0.07	0.41 0.36	M1 / B1 / VKF 5.2 / B-s2, d0
99-50285	A B	0.29	0.32	0.09	0.47 0.60	0.44 0.31	0.08	0.41 0.37	M1 / B1 / VKF 5.2 / B-s2, d0
99-50286	A B	0.29	0.32	0.06	0.45 0.46	0.49 0.48	0.05	0.41	M1 / B1 / VKF 5.2 / B-s2, d0
99-50287	A B	0.29	0.32	0.07	0.46 0.48	0.47 0.45	0.06	0.41	M1 / B1 / VKF 5.2 / B-s2, d0
99-50288	A B	0.29	0.32	0.06	0.44 0.39	0.50 0.55	0.05	0.42 0.43	M1 / B1 / VKF 5.2 / B-s2, d0
99-50289	A B	0.29	0.32	0.06	0.42 0.30	0.52 0.64	0.05	0.43 0.46	M1 / B1 / VKF 5.2 / B-s2, d0
99-50290	A B	0.29	0.32	0.05	0.41 0.25	0.54 0.70	0.04	0.43 0.48	M1 / B1 / VKF 5.2 / B-s2, d0
99-50291	A B	0.29	0.32	0.07	0.47 0.50	0.46 0.43	0.06	0.41 0.40	M1 / B1 / VKF 5.2 / B-s2, d0
99-50292	A B	0.29	0.32	0.11	0.45 0.52	0.44 0.37	0.09	0.42 0.40	M1 / B1 / VKF 5.2 / B-s2, d0
99-50293	A B	0.29	0.32	0.06	0.46 0.37	0.48 0.57	0.04	0.44	M1 / B1 / VKF 5.2 / B-s2, d0
99-50294	A B	0.29	0.32	0.06	0.47 0.54	0.47 0.40	0.05	0.41 0.39	M1 / B1 / VKF 5.2 / B-s2, d0
99-50295	A B	0.29	0.32	0.08	0.44 0.36	0.48 0.56	0.06	0.42 0.44	M1 / B1 / VKF 5.2 / B-s2, d0
99-50296	A B	0.29	0.32	0.06	0.47 0.49	0.47 0.45	0.04	0.41 0.40	M1 / B1 / VKF 5.2 / B-s2, d0
99-50297	A B	0.29	0.32	0.04	0.42 0.21	0.54 0.75	0.03	0.43 0.49	M1 / B1 / VKF 5.2 / B-s2, d0
99-50298	A B	0.29	0.32	0.07	0.38 0.17	0.55 0.76	0.04	0.44 0.50	M1 / B1 / VKF 5.2 / B-s2, d0
99-50299	A B	0.29	0.32	0.06	0.46 0.50	0.48 0.44	0.04	0.41 0.40	M1 / B1 / VKF 5.2 / B-s2, d0
99-50300	A B	0.29	0.32	0.05	0.48 0.41	0.47 0.54	0.04	0.41 0.43	M1 / B1 / VKF 5.2 / B-s2, d0
99-2115	A B	0.29	0.32	0.07	0.64 0.10	0.30 0.83	0.07	0.36 0.52	M1 / B1 / VKF 5.2 / B-s2, d0
99-2261 E	A B	0.29	0.32	0.06	0.69 0.68	0.25 0.26	0.06	0.34	M1 / B1 / VKF 5.2 / B-s2, d0
B 99-50284	B	0.54	0.47	0	0.62	0.38	0	0.36	M2 / B1 / VKF 5.2 / B-s2, d0
B 99-50285	B	0.54	0.47	0	0.61	0.39	0	0.36	M2 / B1 / VKF 5.2 / B-s2, d0
B 99-50287	B	0.54	0.47	0	0.47	0.53	0	0.41	M2 / B1 / VKF 5.2 / B-s2, d0
B 99-50288	B	0.54	0.47	0	0.40	0.60	0	0.43	M2 / B1 / VKF 5.2 / B-s2, d0
B 99-50348	B	0.54	0.47	0	0.69	0.31	0	0.34	M2 / B1 / VKF 5.2 / B-s2, d0
B 99-50354	B	0.54	0.47	0	0.25	0.75	0	0.48	M2 / B1 / VKF 5.2 / B-s2, d0
B 99-50358	B	0.54	0.47	0	0.45	0.55	0	0.41	M2 / B1 / VKF 5.2 / B-s2, d0
B 99-50613	B	0.54	0.47	0	0.45	0.55	0	0.42	M2 / B1 / VKF 5.2 / B-s2, d0
B 99-50614	B	0.54	0.47	0	0.08	0.92	0	0.54	M2 / B1 / VKF 5.2 / B-s2, d0
B 99	Verso Alu A	0.54	0.47	0	0.29	0.71	0	0.46	M2 / B1 / VKF 5.2 / B-s2, d0





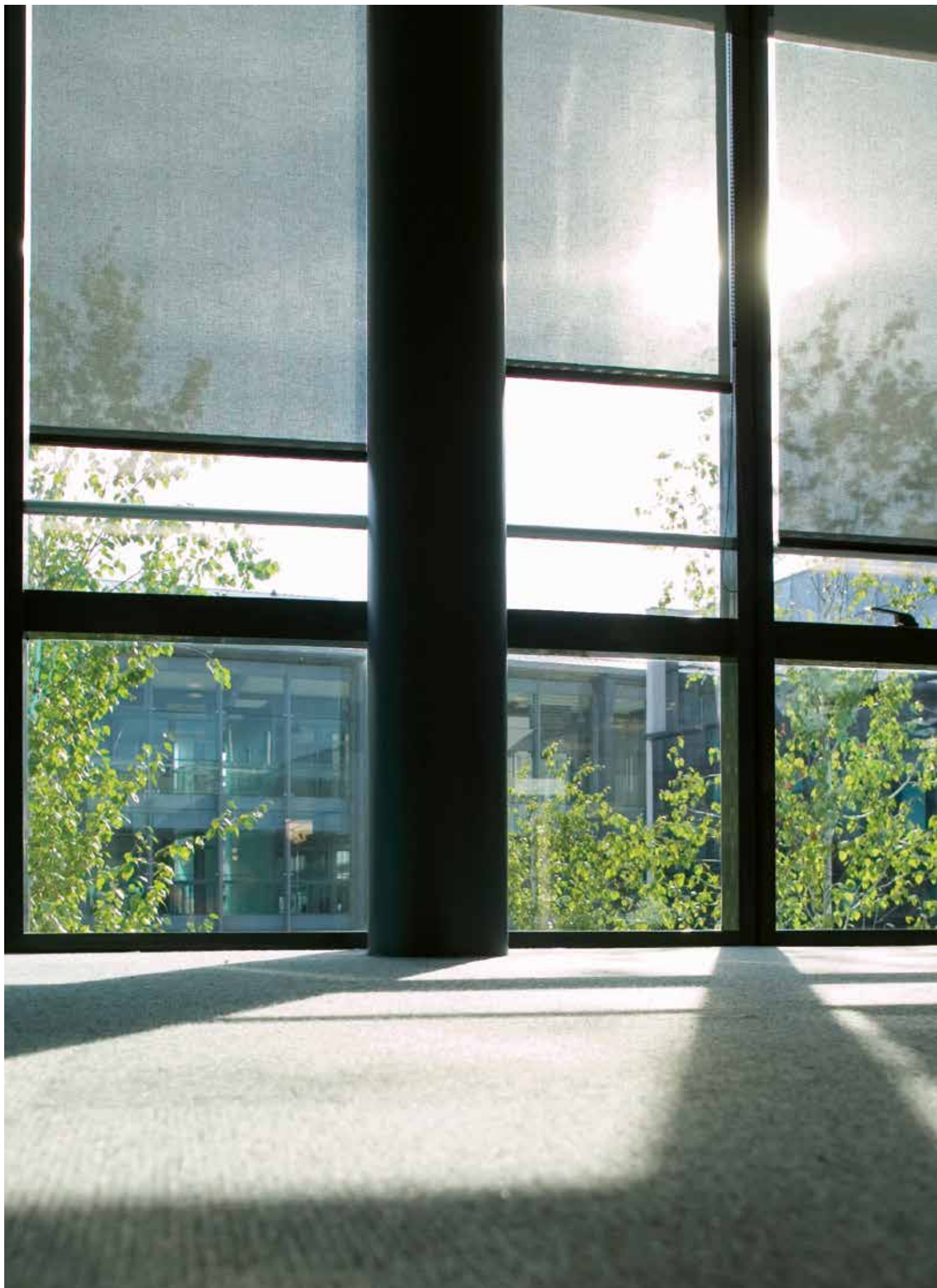
DISEGNO	LATO			TENDA				FATTORE SOLARI DENTRO	
				T <sub>e</sub>	R <sub>e</sub>	A <sub>e</sub>	T <sub>v</sub>		
B 990-50360	A	0.65	0.53	0	0.69	0.31	0	0.34	M2 / B1 / VKF 5.2 / B-s2, d0
	B				0.78	0.22		0.31	
B 702-455	A	0.75	0.60	0	0.72	0.28	0	0.33	M2 / B1 / VKF 5.2 / B-s2, d0
	B				0.06	0.94		0.53	
<b>JM</b>									
40818-4898		0.215	0.35	0.17	0.76	0.07	0.15	0.32	M1 / B1
40818-4899		0.215	0.35	0.13	0.63	0.24	0.09	0.37	M1 / B1
40818-5108		0.215	0.35	0.11	0.34	0.55	0.04	0.46	M1 / B1
40818-5770		0.215	0.35	0.03	0.38	0.59	0.02	0.44	M1 / B1
40818-5832		0.215	0.35	0	0.06	0.94	0	0.55	M1 / B1
40818-6117		0.215	0.35	0.15	0.71	0.14	0.14	0.34	M1 / B1
40818-6625		0.215	0.35	0	0.19	0.81	0	0.51	M1 / B1
40818-7616		0.215	0.35	0	0.21	0.79	0	0.50	M1 / B1
40818-7619		0.215	0.35	0.06	0.38	0.56	0.01	0.45	M1 / B1
40818-7622		0.215	0.35	0.11	0.49	0.40	0.01	0.41	M1 / B1
40818-7625		0.215	0.35	0.01	0.23	0.76	0	0.49	M1 / B1
40818-7628		0.215	0.35	0	0.11	0.89	0	0.53	M1 / B1
40818-10326		0.215	0.35	0.18	0.60	0.22	0.14	0.38	M1 / B1
40818-10327		0.215	0.35	0.15	0.56	0.29	0.06	0.39	M1 / B1
40818-10328		0.215	0.35	0.15	0.48	0.37	0.02	0.41	M1 / B1
40818-10329		0.215	0.35	0.12	0.38	0.50	0	0.45	M1 / B1
40818-10330		0.215	0.35	0.10	0.44	0.46	0	0.43	M1 / B1
40818-10331		0.215	0.35	0.05	0.37	0.58	0.03	0.45	M1 / B1
40818-10332		0.215	0.35	0.12	0.57	0.31	0.08	0.38	M1 / B1
40985-4898		0.310	0.42	0	0.67	0.33	0	0.35	M1 / B1
40985-5108		0.310	0.42	0	0.49	0.51	0	0.41	M1 / B1
40985-5832		0.310	0.42	0	0.06	0.94	0	0.55	M1 / B1
40985-6117		0.310	0.42	0	0.70	0.30	0	0.34	M1 / B1
40985-6625		0.310	0.42	0	0.17	0.83	0	0.51	M1 / B1
40985-10331		0.310	0.42	0	0.44	0.56	0	0.42	M1 / B1
<b>MERMET</b>									
8505-0121		0.39	0.50	0.15	0.28	0.58	0.11	0.48	M1 / B1 / C-s3, d0
8505-0141		0.39	0.50	0.09	0.16	0.75	0.07	0.53	M1 / B1 / C-s3, d0
8505-0201		0.39	0.50	0.15	0.44	0.41	0.12	0.41	M1 / B1 / C-s3, d0
8505-0202		0.39	0.50	0.22	0.67	0.01	0.21	0.31	M1 / B1 / C-s3, d0
8505-0207		0.39	0.50	0.18	0.51	0.30	0.16	0.37	M1 / B1 / C-s3, d0
8505-0210		0.39	0.50	0.17	0.51	0.31	0.14	0.37	M1 / B1 / C-s3, d0
8505-0220		0.39	0.50	0.22	0.59	0.18	0.20	0.33	M1 / B1 / C-s3, d0
8505-0707		0.39	0.50	0.16	0.35	0.50	0.14	0.44	M1 / B1 / C-s3, d0
8505-0710		0.39	0.50	0.15	0.35	0.51	0.12	0.44	M1 / B1 / C-s3, d0
8505-0720		0.39	0.50	0.17	0.40	0.42	0.15	0.42	M1 / B1 / C-s3, d0
8505-0721		0.39	0.50	0.19	0.39	0.42	0.17	0.42	M1 / B1 / C-s3, d0
8505-0771		0.39	0.50	0.19	0.38	0.43	0.16	0.43	M1 / B1 / C-s3, d0
8505-2020		0.39	0.50	0.22	0.51	0.27	0.18	0.38	M1 / B1 / C-s3, d0
8505-2041		0.39	0.50	0.12	0.33	0.55	0.09	0.46	M1 / B1 / C-s3, d0
8505-3001		0.39	0.50	0.06	0.09	0.85	0.05	0.55	M1 / B1 / C-s3, d0
8505-3006		0.39	0.50	0.06	0.06	0.89	0.06	0.55	M1 / B1 / C-s3, d0
8505-3010		0.39	0.50	0.06	0.12	0.82	0.05	0.53	M1 / B1 / C-s3, d0
8505-3030		0.39	0.50	0.05	0.05	0.91	0.04	0.56	M1 / B1 / C-s3, d0
SV10-0101		0.34	0.42	0.07	0.18	0.65	0.14	0.52	M1 / B1 / C-s3, d0
SV10-0102		0.34	0.42	0.19	0.31	0.50	0.16	0.47	M1 / B1 / C-s3, d0
SV10-0110		0.34	0.42	0.17	0.23	0.60	0.14	0.49	M1 / B1 / C-s3, d0
SV10-0202		0.34	0.42	0.28	0.62	0.10	0.27	0.32	M1 / B1 / C-s3, d0
SV10-0207		0.34	0.42	0.25	0.50	0.25	0.22	0.38	M1 / B1 / C-s3, d0
SV10-0210		0.34	0.42	0.24	0.49	0.27	0.21	0.39	M1 / B1 / C-s3, d0
SV10-0220		0.34	0.42	0.27	0.56	0.17	0.25	0.36	M1 / B1 / C-s3, d0
SV10-0707		0.34	0.42	0.21	0.33	0.46	0.19	0.45	M1 / B1 / C-s3, d0

DISEGNO	LATO			TENDA				FATTORE SOLARI DENTRO	
				$T_e$	$R_e$	$A_e$	$T_v$	$g\text{-total}_i$	
SV10-0720		0.34	0.42	0.24	0.37	0.39	0.21	0.43	M1 / B1 / C-s3, d0
SV10-2020		0.34	0.42	0.27	0.47	0.26	0.24	0.40	M1 / B1 / C-s3, d0
SV10-2022		0.34	0.42	0.29	0.46	0.25	0.26	0.40	M1 / B1 / C-s3, d0
SV10-3001		0.34	0.42	0.11	0.09	0.80	0.10	0.54	M1 / B1 / C-s3, d0
SV10-3006		0.34	0.42	0.12	0.06	0.82	0.12	0.55	M1 / B1 / C-s3, d0
SV10-3030		0.34	0.42	0.10	0.05	0.85	0.10	0.56	M1 / B1 / C-s3, d0
Satiné 5500 Low E		0.52	0.65	0.04	0.78	0.18	0.04	0.26	M1 / B1 / C-s3, d0
11201-600		0.425 - 0.570	0.45 - 0.50	0	0.73	0.27	0	0.27	M1 / B1
11201-606		0.425 - 0.570	0.45 - 0.50	0	0.04	0.96	0	0.56	M1 / B1
11201-608		0.425 - 0.570	0.45 - 0.50	0	0.46	0.54	0	0.40	M1 / B1
11201-609		0.425 - 0.570	0.45 - 0.50	0	0.25	0.75	0	0.40	M1 / B1
11201-614		0.425 - 0.570	0.45 - 0.50	0	0.17	0.83	0	0.52	M1 / B1
11201-617		0.425 - 0.570	0.45 - 0.50	0	0.04	0.96	0	0.56	M1 / B1
11201-618		0.425 - 0.570	0.45 - 0.50	0	0.63	0.37	0	0.32	M1 / B1
11201-623		0.425 - 0.570	0.45 - 0.50	0	0.69	0.31	0	0.29	M1 / B1
11201-625		0.425 - 0.570	0.45 - 0.50	0	0.74	0.26	0	0.27	M1 / B1
Flocké	Verso bianco	0.425 - 0.570	0.45 - 0.50	0	0.70	0.30	0	0.26	M1 / B1
8500-0202		0.59 - 0.65	0.50 - 0.55	0	0.74	0.26	0	0.25	M1 / B1
8500-0207		0.59 - 0.65	0.50 - 0.55	0	0.58	0.42	0	0.33	M1 / B1
8500-0220		0.59 - 0.65	0.50 - 0.55	0	0.67	0.33	0	0.29	M1 / B1
8500-0707		0.59 - 0.65	0.50 - 0.55	0	0.40	0.60	0	0.41	M1 / B1
8500-2020		0.59 - 0.65	0.50 - 0.55	0	0.58	0.42	0	0.34	M1 / B1
8500-3001		0.59 - 0.65	0.50 - 0.55	0	0.09	0.91	0	0.54	M1 / B1
8500-3006		0.59 - 0.65	0.50 - 0.55	0	0.06	0.94	0	0.55	M1 / B1
8500-3010		0.59 - 0.65	0.50 - 0.55	0	0.13	0.87	0	0.53	M1 / B1
8500-3030		0.59 - 0.65	0.50 - 0.55	0	0.05	0.95	0	0.55	M1 / B1
KIBO	Verso bianco	0.59 - 0.65	0.50 - 0.55	0	0.64	0.36	0	0.30	M1 / B1

Tutti i dati relativi alle superfici esposte al sole.

## LEGENDA

$T_e$	= coefficiente di trasmissione spettro solare		Spessore
$R_e$	= coefficiente di riflessione spettro solare		Resistenza al fuoco
$A_e$	= fattore di assorbimento solare		M0-M1 / NFP 92-503
$T_v$	= coefficiente di trasmissione spettro visibile		M1 / NFP 92-503
			A2 / DIN 4102-1
			B1 / DIN 4102-1
$g\text{-total}_i$	= Fattore solare interno - vetrata di riferimento C secondo EN 14501, $g = 0.59$ , $U = 1.20$ [W/m <sup>2</sup> K]		VKF 5.2 / SN 198898
			VKF 5.3 / SN 198898
			Euroclass A2-s1, d0 / EN 13501
			Euroclass B-s1, d0 / EN 13501
			Euroclass B-s2, d0 / EN 13501
			Euroclass B-s3, d0 / EN 13501





[www.griessergroup.com](http://www.griessergroup.com)

