

**Collection Screen.
Una scelta automatica.**



Bâtiment Nice Meridia - Nice (06) / © Reichen et Robert & Associés architectes - urbanistes



Collection Screen

Classic Satiné 5500

MONTANA



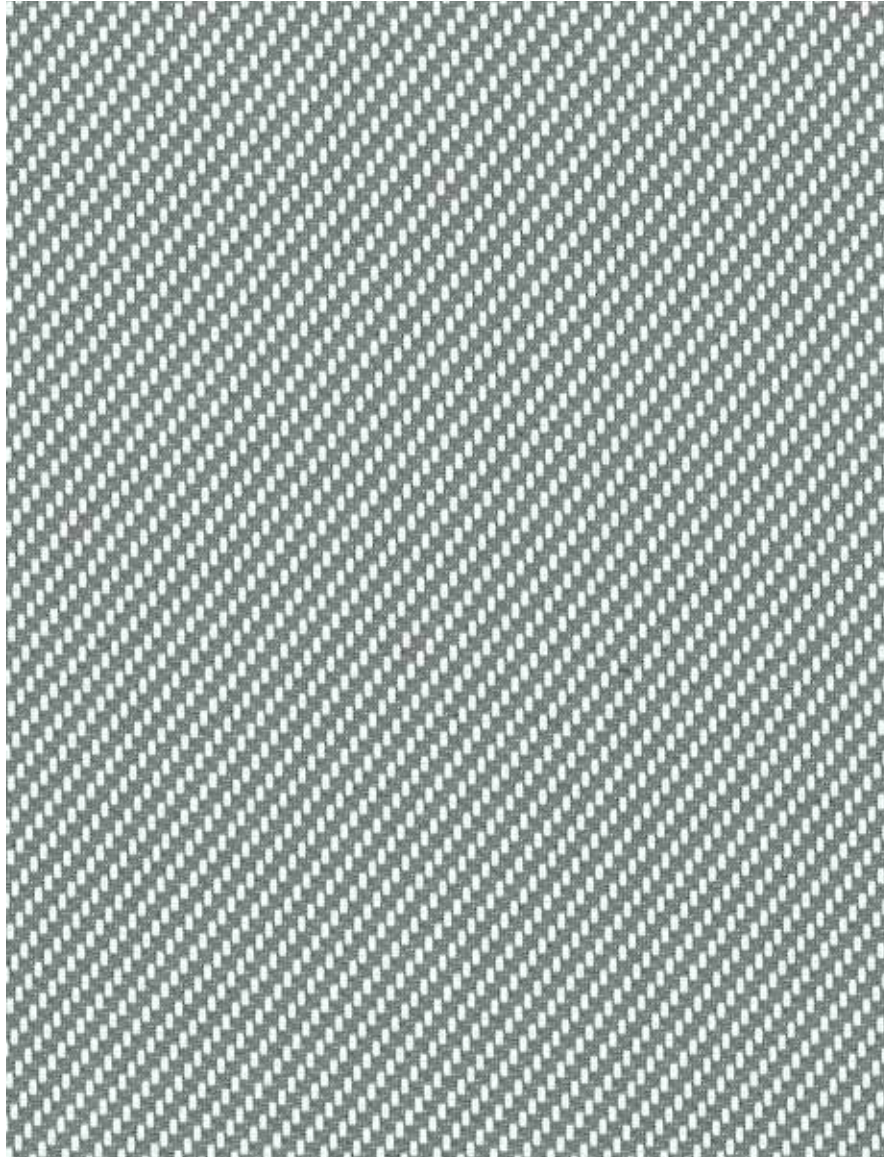
ETNA



SAHARA



BORA BORA



Montana - 0201 Blanc Gris

CONSIGLIO SUL MATERIALE PER FABBRICATI

Per motivi di protezione dal calore il valore g deve essere $\leq 10\%$

Per garantire la protezione dall'abbagliamento la trasparenza deve essere $\leq 5\%$.

La trasmissione della luce deve essere $\geq 5\%$ per avere uno sfruttamento ottimale della luce diurna.

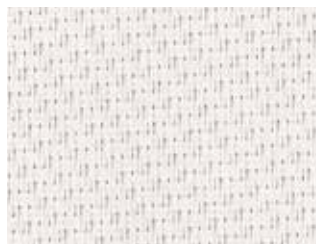
Per ottenere la protezione termica migliore pensabile, va scelto un materiale che abbia la permeabilità al calore (Te) più bassa possibile, meglio con un colore scuro.



Montana



0202 Blanc



(A)

0207 Blanc Perle



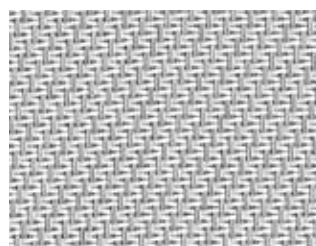
(B)



(A)

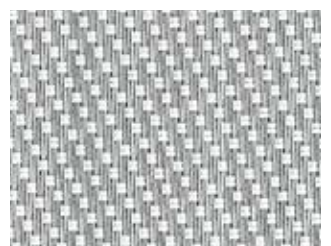
M36 020207 Blanc Blanc Perle

(B)

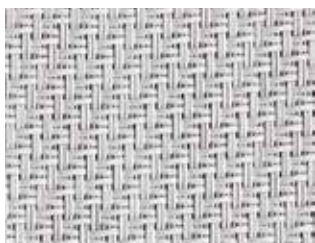


(A)

0702 Perle Blanc



(B)



0707 Perle



(A)

0701 Perle Gris



(B)



0101 Gris

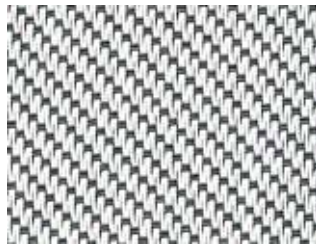
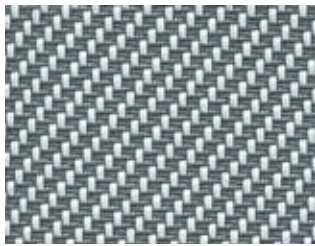


(A)

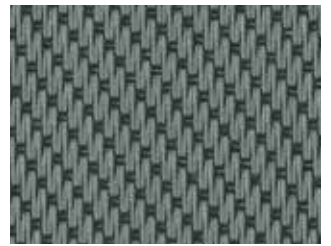
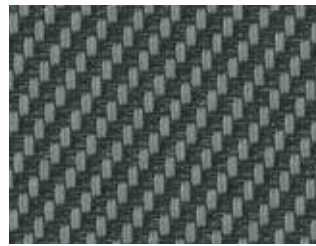
0102 Gris Blanc



(B)



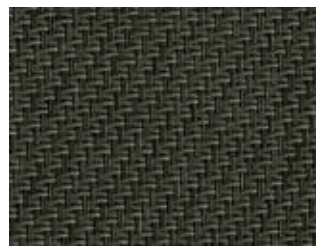
(A) 0201 Blanc Gris (B)



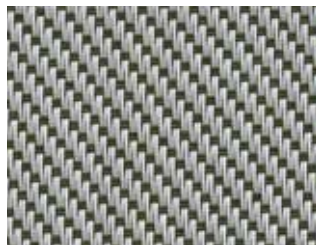
(A) 0130 Gris Charcoal (B)



(A) M38 300120 Charcoal Gris Lin (B)



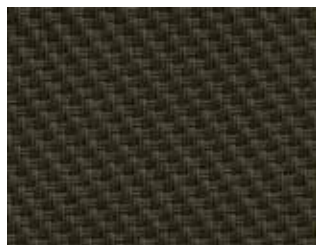
3030 Charcoal



(A) 0706 Perle Bronze (B)



(A) 3006 Charcoal Bronze (B)



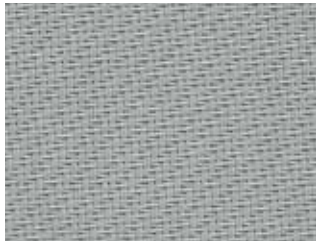
0606 Bronze



(A) 3001 Charcoal Gris (B)



Montana

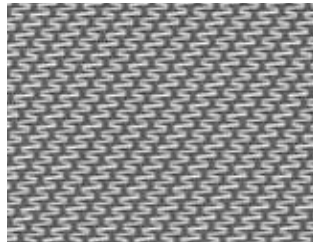


(A)

4949 RAL 9006

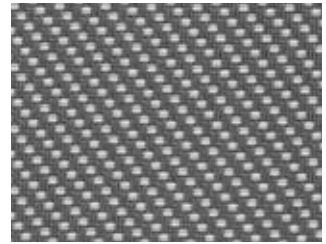


(B)



(A)

M31 010207 Gris Blanc Perle



(B)





Etna

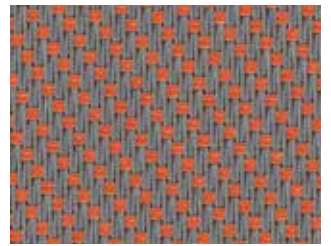


0909 Mandarine

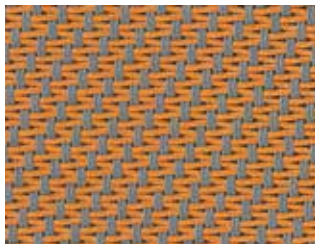


(A)

0109 Gris Mandarine

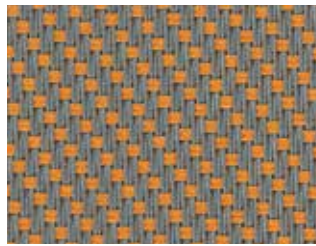


(B)



(A)

0108 Gris Or

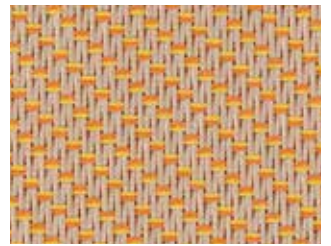


(B)



(A)

M65 100508 Sable Canari Or



(B)

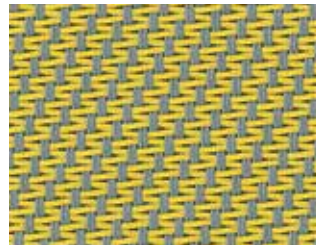


(A)

M64 100520 Sable Canari Lin

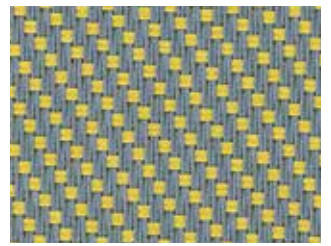


(B)

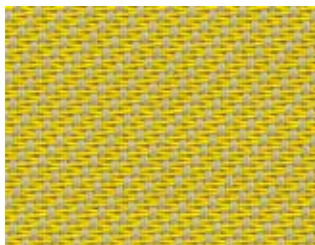


(A)

0105 Gris Canari

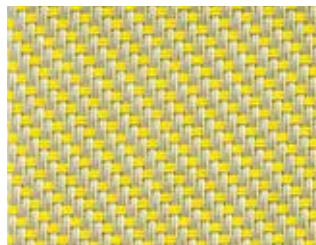


(B)



(A)

0705 Perle Canari



(B)

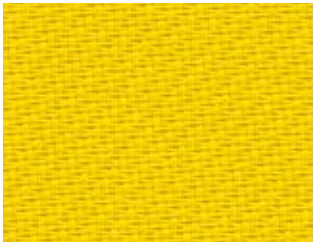


(A)

0205 Blanc Canari



(B)



0505 Canari



Sahara



(A)

1006 Sable Bronze



(B)



(A)

0110 Gris Sable



(B)



1010 Sable



(A)

0710 Perle Sable



(B)



(A)

M45 070210 Perle Blanc Sable



(B)



(A)

M37 200710 Lin Perle Sable



(B)



(A)

0720 Perle Lin



(B)



(A)

1002 Sable Blanc



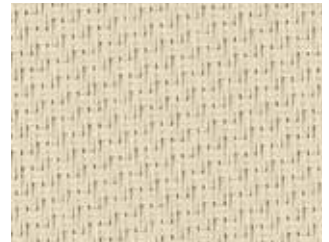
(B)



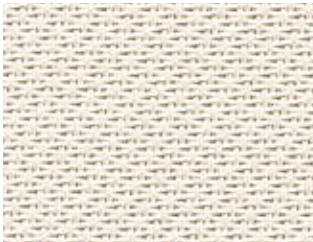
(A)

0210 Blanc Sable

(B)



2020 Lin



(A)

2002 Lin Blanc

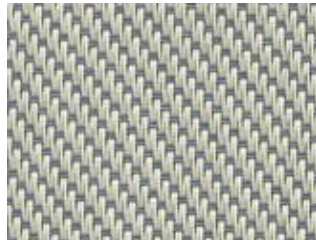
(B)



(A)

1001 Sable Gris

(B)



(A)

2001 Lin Gris

(B)



(A)

1111 RAL 7048

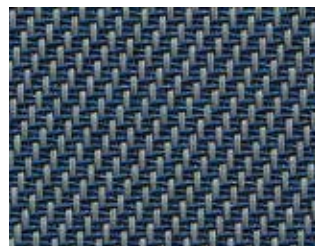
(B)



Bora Bora



4040 Outremer



(A)

0140 Gris Outremer

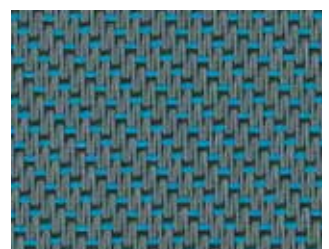
(B)



0740 Perle Outremer

(A)

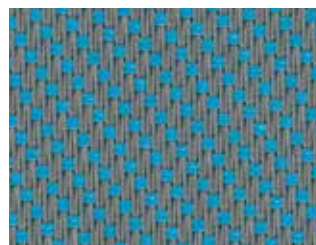
(B)



(A)

M01 010330 Gris Turquoise Charcoal

(B)



0103 Gris Turquoise

(A)

(B)



0703 Perle Turquoise

(A)

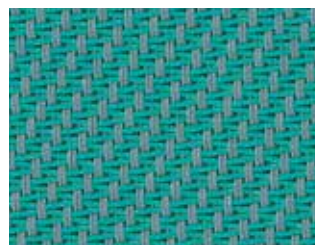
(B)



M02 020310 Blanc Turquoise Sable

(A)

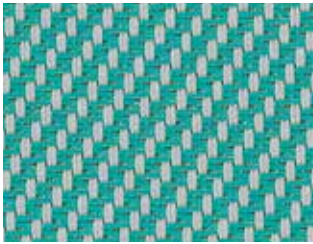
(B)



0150 Gris Vert

(A)

(B)






(A)






(B)

0750 Perle Vert

PROPRIETÀ DEL MATERIALE - CLASSIC SATINÉ

DISEGNO	LATO AN-TERIORE	COLORE			TENDA				FATTORE SOLARI ESTERNO	FATTORE SOLARI DENTRO	
					T _e	R _e	A _e	T _v	g-total _e	g-total _i	
MONTANA											
0202		Blanc	0.52	0.75	0.21	0.66	0.13	0.21	0.16	0.31	M1/B1/C-s3,d0/VKF RF2 cr
0207	A	Blanc Perle	0.52	0.75	0.17	0.50	0.33	0.16	0.12	0.27	"
	B				0.17	0.55	0.28	0.16	0.12	0.35	"
M36 020207	A	Blanc Blanc Perle	0.52	0.75	0.19	0.57	0.24	0.18	0.14	0.35	"
	B				0.19	0.60	0.21	0.18	0.14	0.33	"
0702	A	Perle Blanc	0.52	0.75	0.17	0.50	0.33	0.16	0.12	0.37	"
	B				0.17	0.45	0.38	0.16	0.12	0.39	"
0707		Perle	0.52	0.75	0.14	0.38	0.48	0.13	0.11	0.43	"
0701	A	Perle Gris	0.52	0.75	0.11	0.27	0.62	0.09	0.08	0.48	"
	B				0.11	0.31	0.58	0.09	0.08	0.45	"
0101		Gris	0.52	0.75	0.08	0.20	0.72	0.07	0.07	0.51	"
0102	A	Gris Blanc	0.52	0.75	0.10	0.40	0.50	0.07	0.08	0.42	"
	B				0.10	0.31	0.59	0.07	0.08	0.47	"
0201	A	Blanc Gris	0.52	0.75	0.12	0.37	0.51	0.09	0.09	0.44	"
	B				0.11	0.48	0.41	0.09	0.09	0.38	"
0130	A	Gris Charcoal	0.52	0.75	0.05	0.12	0.83	0.05	0.06	0.54	"
	B				0.06	0.15	0.79	0.05	0.06	0.52	"
M38 300120	A	Charcoal Gris Lin	0.52	0.75	0.06	0.19	0.75	0.05	0.06	0.50	"
	B				0.06	0.13	0.81	0.05	0.06	0.53	"
3030		Charcoal	0.52	0.75	0.04	0.06	0.90	0.04	0.05	0.56	"
0706	A	Perle Bronze	0.52	0.75	0.08	0.18	0.74	0.07	0.07	0.51	"
	B				0.08	0.25	0.67	0.07	0.07	0.47	"
3006	A	Charcoal Bronze	0.52	0.75	0.04	0.07	0.89	0.04	0.05	0.55	"
	B				0.04	0.07	0.89	0.04	0.05	0.56	"
0606		Bronze	0.52	0.75	0.05	0.07	0.88	0.05	0.06	0.55	"
3001	A	Charcoal Gris	0.52	0.75	0.05	0.13	0.88	0.05	0.06	0.53	"
	B				0.05	0.10	0.85	0.05	0.06	0.55	"
4949	A	RAL 9006	0.52	0.75	0.11	0.37	0.52	0.10	0.09	0.43	"
	B				0.11	0.37	0.52	0.10	0.09	0.43	"
M31 010207	A	Gris Blanc Perle	0.52	0.75	0.10	0.34	0.56	0.08	0.08	0.45	"
	B				0.10	0.28	0.62	0.08	0.08	0.49	"
ETNA											
0909		Mandarine	0.52	0.75	0.18	0.44	0.38	0.07	0.13	0.42	M1/B1/C-s3,d0/VKF RF2 cr
0109	A	Gris Mandarine	0.52	0.75	0.09	0.30	0.61	0.05	0.07	0.48	"
	B				0.09	0.26	0.65	0.05	0.07	0.48	"
0108	A	Gris Or	0.52	0.75	0.10	0.32	0.58	0.07	0.08	0.48	"
	B				0.11	0.26	0.63	0.07	0.08	0.50	"
M65 100508	A	Sable Canari Or	0.52	0.75	0.15	0.43	0.42	0.11	0.11	0.42	"
	B				0.15	0.42	0.43	0.11	0.11	0.42	"
M64 100520	A	Sable Canari Lin	0.52	0.75	0.16	0.45	0.39	0.12	0.11	0.40	"
	B				0.16	0.43	0.41	0.12	0.11	0.41	"
0105	A	Gris Canari	0.52	0.75	0.10	0.33	0.57	0.07	0.07	0.45	"
	B				0.09	0.28	0.63	0.07	0.07	0.46	"
0705	A	Perle Canari	0.52	0.75	0.16	0.42	0.42	0.15	0.12	0.42	"
	B				0.16	0.40	0.44	0.15	0.12	0.43	"
0205	A	Blanc Canari	0.52	0.75	0.19	0.58	0.23	0.18	0.14	0.36	"
	B				0.19	0.61	0.20	0.18	0.15	0.34	"
0505		Canari	0.52	0.75	0.20	0.51	0.29	0.17	0.15	0.39	"

DISEGNO	LATO ANTERIORE	COLORE			TENDA				FATTORE SOLARI ESTERNO	FATTORE SOLARI DENTRO	
					T _e	R _e	A _e	T _v	g-total _e	g-total _i	
SAHARA											
1006	A	Sable Bronze	0.52	0.75	0.08	0.18	0.74	0.07	0.07	0.51	M1/B1/C-s3,d0/VKF RF2 cr
	B				0.08	0.26	0.66	0.07	0.07	0.48	"
0110	A	Gris Sable	0.52	0.75	0.09	0.29	0.62	0.07	0.07	0.47	"
	B				0.10	0.25	0.65	0.07	0.07	0.49	"
1010		Sable	0.52	0.75	0.13	0.39	0.48	0.10	0.10	0.43	"
0710	A	Perle Sable	0.52	0.75	0.14	0.38	0.48	0.12	0.10	0.43	"
	B				0.14	0.37	0.49	0.12	0.10	0.43	"
M45 070210	A	Perle Blanc Sable	0.52	0.75	0.15	0.43	0.42	0.14	0.11	0.41	"
	B				0.15	0.41	0.44	0.14	0.11	0.42	"
M37 200710	A	Lin Perle Sable	0.52	0.75	0.16	0.45	0.39	0.14	0.12	0.40	"
	B				0.16	0.48	0.36	0.14	0.11	0.39	"
0720	A	Perle Lin	0.52	0.75	0.17	0.41	0.42	0.15	0.12	0.41	"
	B				0.17	0.41	0.42	0.15	0.12	0.41	"
1002	A	Sable Blanc	0.52	0.75	0.16	0.51	0.33	0.13	0.11	0.37	M1/B1/C-s3,d0/VKF RF2 cr
	B				0.16	0.46	0.38	0.13	0.11	0.40	"
0210	A	Blanc Sable	0.52	0.75	0.17	0.50	0.33	0.15	0.12	0.38	"
	B				0.17	0.55	0.28	0.15	0.12	0.35	"
2020		Lin	0.52	0.75	0.18	0.53	0.29	0.16	0.13	0.37	"
2002	A	Lin Blanc	0.52	0.75	0.20	0.58	0.22	0.18	0.14	0.35	"
	B				0.20	0.56	0.24	0.18	0.14	0.36	"
1001	A	Sable Gris	0.52	0.75	0.10	0.25	0.62	0.08	0.08	0.48	"
	B				0.10	0.33	0.57	0.08	0.08	0.46	"
2001	A	Lin Gris	0.52	0.75	0.12	0.32	0.56	0.09	0.09	0.46	"
	B				0.11	0.40	0.49	0.09	0.09	0.43	"
1111		RAL 7048	0.52	0.75	0.05	0.17	0.78	0.05	0.06	0.52	"
BORA BORA											
4040		Outremer	0.52	0.75	0.14	0.25	0.61	0.05	0.10	0.53	M1/B1/C-s3,d0 / VKF RF2 cr
0140	A	Gris Outremer	0.52	0.75	0.08	0.22	0.70	0.05	0.07	0.52	"
	B				0.08	0.21	0.71	0.05	0.07	0.52	"
0740	A	Perle Outremer	0.52	0.75	0.13	0.28	0.59	0.07	0.10	0.51	"
	B				0.13	0.31	0.56	0.07	0.09	0.48	"
M01 010330	A	Gris Turquoise Charcoal	0.52	0.75	0.08	0.20	0.72	0.06	0.07	0.51	"
	B				0.08	0.20	0.72	0.06	0.07	0.51	"
0103	A	Gris Turquoise	0.52	0.75	0.09	0.30	0.61	0.06	0.07	0.48	"
	B				0.09	0.26	0.65	0.06	0.07	0.48	"
0703	A	Perle Turquoise	0.52	0.75	0.13	0.38	0.49	0.09	0.10	0.45	"
	B				0.14	0.38	0.48	0.09	0.10	0.44	"
M02 020310	A	Blanc Turquoise Sable	0.52	0.75	0.17	0.49	0.34	0.13	0.12	0.39	"
	B				0.17	0.55	0.23	0.13	0.12	0.36	"
0150	A	Gris Vert	0.52	0.75	0.09	0.26	0.65	0.06	0.07	0.48	"
	B				0.09	0.23	0.68	0.06	0.07	0.50	"
0750	A	Perle Vert	0.52	0.75	0.14	0.33	0.53	0.11	0.10	0.47	"
	B				0.14	0.34	0.52	0.11	0.10	0.45	"

LEGENDA

T_e = coefficiente di trasmissione spettro solare
R_e = coefficiente di riflessione spettro solare
A_e = fattore di assorbimento solare
T_v = coefficiente di trasmissione spettro visibile
g-total_e = coefficiente di trasmissione energetica totale per protezioni solari esterne „chiuse“

con vetrate, calcolo secondo SN EN 133632, vetrata di riferimento C secondo EN 14501, g = 0.59, U = 1,20 [W/°K]
g-total_i = Fattore solare interno - vetrata di riferimento C secondo EN 14501, g = 0.59, U = 1.20 [W/m²K]



Spessore



Resistenza al fuoco
M1/NFP 92-503
B1/DIN 4102-1
Euroclass C-s3,d0/EN13501
VKF RF2 cr / VKF 14 - 15



www.griessergroup.com

